

# FOR LEASE



**5204 VILLAGE PARKWAY, SUITE #5 | VILLAGE ON THE CREEKS, ROGERS, AR**

Village on the Creeks is the largest garden office park in Northwest Arkansas. It houses office, retail, restaurant, and medical tenants and enhances quality of life by offering a walking trail on Razorback Greenway and a lake with beautiful views. Suite 5 has one office, one restroom, storage, a large open area, a catering kitchen and bar area, and is suitable for retail space.



**Suite 5  
2,155 SF**



**1 Office  
Large Open Area  
Catering Kitchen/Bar Area  
1 Restrooms**

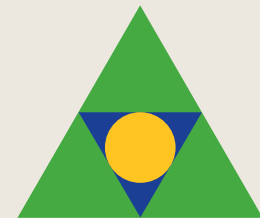


**Direct access to  
Razorback Greenway  
and walking trails in a  
beautiful setting**



**Quick and easy  
access to  
Interstate 49**

## **\$18.50 PSF NNN**



**Devereux**  
Real Estate Investments

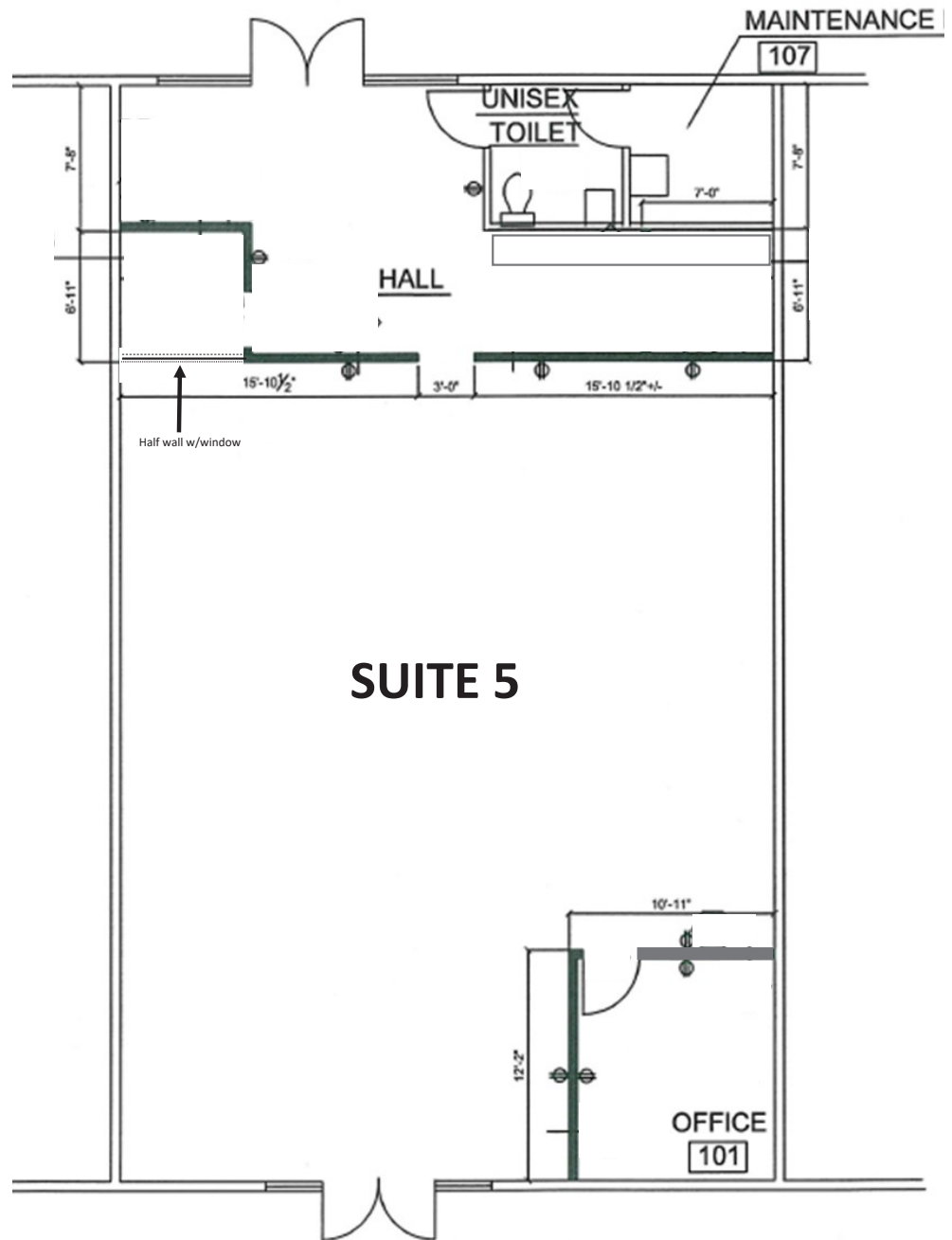
**PAT MORRISON  
EXECUTIVE BROKER**

**5309 W. VILLAGE PKWY | SUITE 2  
ROGERS, AR 72758  
P. 479-464-4292  
C. 479-936-4200  
PatMorrison@DevereuxREI.com**

# FLOOR PLAN

**5204 Village Parkway  
Suite #5**

- 2,155 SF
- 1 Office
- Great for Event Center
- Suitable for Retail
- Catering Kitchen/Bar Area
- 1 Restroom
- Storage Closet



**Devereux**

Real Estate Investments

**PAT MORRISON**  
EXECUTIVE BROKER

5309 W. VILLAGE PKWY | SUITE 2  
ROGERS, AR 72758  
P. 479-464-4292  
C. 479-936-4200  
PatMorrison@DevereuxREI.com



**PAT MORRISON**  
**EXECUTIVE BROKER**

5309 W. VILLAGE PKWY | SUITE 2  
 ROGERS, AR 72758  
 P. 479-464-4292  
 C. 479-936-4200  
 PatMorrison@DevereuxREI.com

